



4250 Diamond St #3, Capitola, CA 95010

\$727,860

Redfin Estimate

2

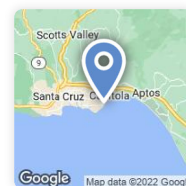
Beds

1

Bath

890

Sq Ft



Off Market

About This Home

4250 Diamond St #3 is a 890 square foot condo with 2 bedrooms and 1 bathroom. This home is currently off market. Based on Redfin's Capitola data, we estimate the home's value is \$727,860.

Redfin last checked: over 7 days ago. Source: Public Records

Redfin Estimate for 4250 Diamond St #3

[Edit Home Facts](#) to improve accuracy.

[Create an Owner Estimate](#)

\$727,860

[See estimate history](#)

Redfin Estimate based on recent home sales

Track This Estimate

Neutral estimate based on recent home sales.



\$745,000 Sold Price

A

2 Beds 1 Bath 890 Sq. Ft.

1405 45th Ave #2, CAPITOLA, CA 95010

+ \$19/sq ft



\$690,000 Sold Price

B

2 Beds 1 Bath 856 Sq. Ft.

1925 46th Ave #149, CAPITOLA, CA 95010

- \$12/sq ft

↑ 1 year newer

[View comparables on map](#) ▾

Homeowner Tools



Edit home facts

Review property details and add renovations.



Manage photos

Update home photos or make them private.



Create an Owner Estimate

Select recent home sales to estimate your home's value.



View Owner Dashboard

Track your estimate and nearby sale activity.

Home Facts

Status	Off Market
Property Type	Condo/Co-op
Year Built	1972

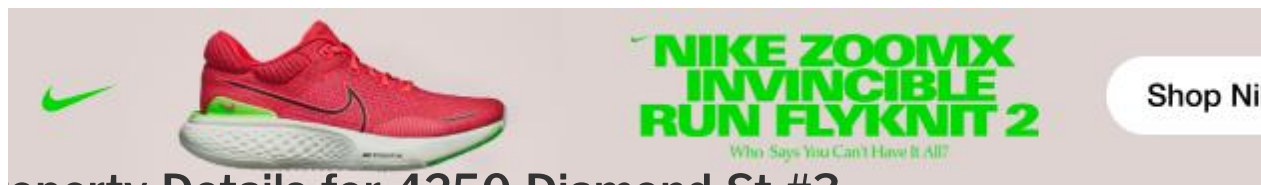
Price Insights

Redfin Estimate	\$727,860
Price/Sq.Ft.	\$818



Advertisement

Hide this ad



Property Details for 4250 Diamond St #3

Interior Features

Bathroom Information

- # of Full Baths: 1

Heating & Cooling

- Heating Type: Central

Room Information

- # of Rooms: 4

Exterior Features

Exterior Information

- Roof Shape Type: Wood

Pool Information

- Has Pool

Taxes / Assessments

Assessor Information

- Assessment Year: 2022
- Tax Area: CAPITOLA CITY

Property / Lot Details

Property Information

- Living Sq. Ft: 890
- Building Sq. Ft: 890

Parking & Garage Information

- Parking Type: Carport
- Garage/Parking Sq. Ft: 231
- Garage / Carport Type: Carport

Lot Information

- # of Buildings: 1
- Land Sq. Ft: 479
- Legal Lot Number: 60
- Municipality Name: CAPITOLA CITY
- Acres: 0.011
- County Use Description: CONDOMINIUM UNIT

Utility Information

- Sewer Type: Public
- Water Service Type: Public

File & Tax History for 4250 Diamond St #3

Sale History **Tax History**

Year	Property Tax	Land	+	Additions	=	Assessed Value ⓘ
2021	\$1,917 (+2.1%)	\$18,221		\$73,049		\$91,270
2020	\$1,877 (+2.3%)	\$17,863		\$71,617		\$89,480
2019	\$1,835 (+2.8%)	\$17,680		\$70,882		\$88,562
2018	\$1,786 (+2.0%)	\$17,333		\$69,492		\$86,825
2017	\$1,751 (+5.0%)	\$16,660		\$66,794		\$83,454
2016	\$1,667 (+9.6%)	\$16,660		\$66,794		\$83,454
2015	\$1,521 (+2.9%)	\$16,333		\$65,484		\$81,817
2014	\$1,478 (+0.4%)	\$15,773		\$63,237		\$79,010
2013	\$1,472 (+2.7%)	\$15,773		\$63,237		\$79,010
2012	\$1,433 (+2.7%)	\$15,702		\$62,951		\$78,653
2011	\$1,395 (+2.2%)	\$15,394		\$61,717		\$77,111
2010	\$1,365 (+1.1%)	\$15,092		\$60,507		\$75,599
2009	\$1,350 (+3.6%)	\$14,979		\$60,055		\$75,034
2008	\$1,303	\$15,015		\$60,198		\$75,213

Advertisement

[Hide this ad](#)


Public Facts for 4250 Diamond St #3



Beds	2
Baths	1
Sq. Ft.	890
Stories	—
Lot Size	—
Style	Condo/Co-op
Year Built	1972
Year Renovated	1972
County	Santa Cruz County
APN	03421607

Home facts updated by county records on Jul 25, 2022.

Schools

GreatSchools Summary Rating

5/10

Soquel Elementary School

Public, K-5 • Serves this home

409

Students

1.1mi

Distance



6 reviews

6/10

New Brighton Middle School

Public, 6-8 • Serves this home

704

Students

0.9mi

Distance



7 reviews

7/10

Soquel High School

Public, 9-12 • Serves this home

1173

Students


1.4mi

Distance



3 reviews

7/10	Harbor High School Public, 9-12 • Serves this home	842 Students	2.0mi Distance	 8 reviews
-------------	--	-----------------	-------------------	---


8/10	Santa Cruz High School Public, 9-12 • Serves this home	1142 Students	3.9mi Distance	 4 reviews
-------------	--	------------------	-------------------	--


School data is provided by GreatSchools, a nonprofit organization. Redfin recommends buyers and renters use GreatSchools information and ratings as a first step, and conduct their own investigation to determine their desired schools or school districts, including by contacting and visiting the schools themselves.

Redfin does not endorse or guarantee this information. School service boundaries are intended to be used as a reference only; they may change and are not guaranteed to be accurate. To verify school enrollment eligibility, contact the school district directly.

ound This Home

Transportation in 95010

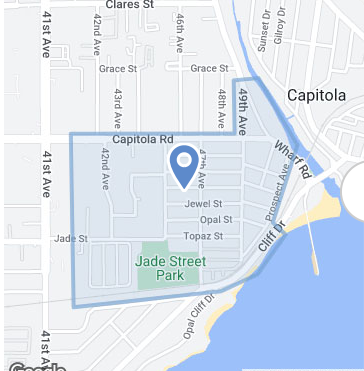

89 / 100
 Very Walkable
 Walk Score®


93 / 100
 Biker's Paradise
 Bike Score®

arket Insights for 4250 Diamond St #3

[Redfin](#) > [California](#) > [Capitola](#) > [95010](#)

Condo Sales (Last 30 days)

Jewel Box Neighborhood			
\$754K	25	2	
Median List Price	Median Days on Mkt.	# Listed Homes	
\$918	99.1%	2	
Median \$ / Sq. Ft.	Median Sale-to-List	# Sold Homes	



Condo Trends in Capitola

Median Sale Price ▼

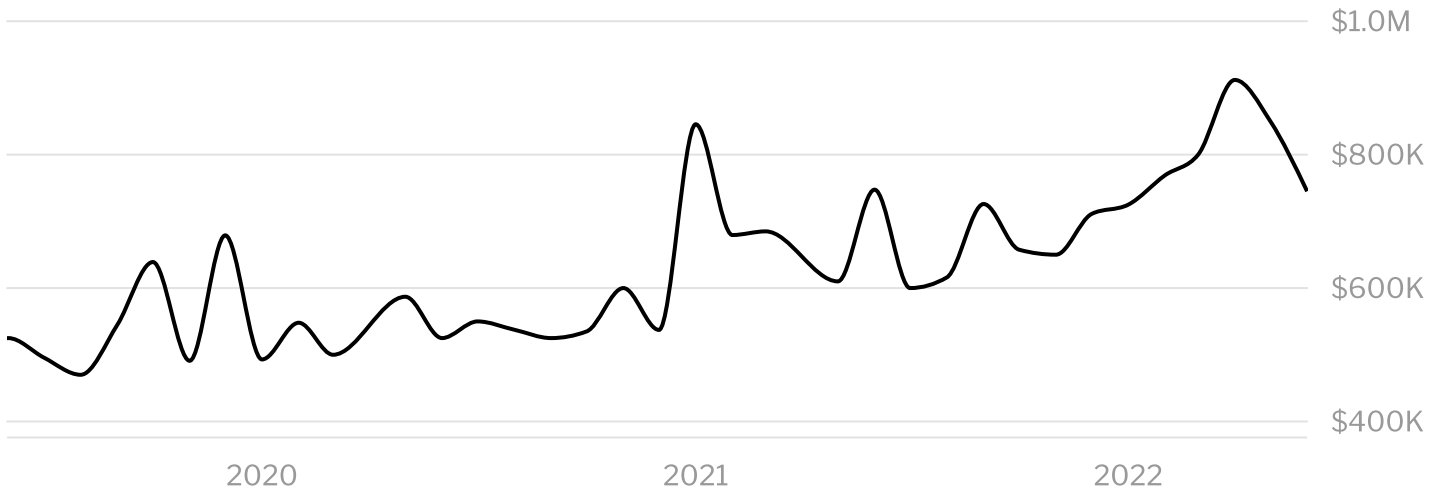
Condos/Co-ops ▼

Median Sale Price (Condos/Co-ops)

\$745,000

-0.33% YoY | Jun 2022

1y 3y 5y



Based on Redfin calculations of home data from MLS and/or public records.

[Share](#)

[Embed](#)

Location	Data Jun 2022	Growth % YoY
Capitola	\$745,000	-0.33%

[See more market trends in Capitola](#)

Market Competition in [Level Box](#)

Market Competition in **Jewel Box**

Calculated over the last 12 months

65 Somewhat Competitive
Redfin Compete Score™ ⓘ

0

100

- Some homes get multiple offers.
- The average homes sell for about **8%** above list price and go pending in around **25 days**.
- Hot homes can sell for about **11%** above list price and go pending in around **8 days**.

Compare to nearby Neighborhoods



Nearby Similar Homes

Homes similar to 4250 Diamond St #3 are listed between \$474K to \$1,249K at an average of \$700 per square foot.

OPEN SAT, 1PM TO 4PM

\$585,000

2 Beds 2 Baths 911 Sq. Ft.

41 Grandview St #1204, SANTA CRUZ, CA 95060

\$579,000

2 Beds 2 Baths 1,410 Sq. Ft.

16625 Big Basin Way #4, BOULDER CREEK, CA 95006

\$549,000

3 Beds 2 Baths 1,488 Sq. Ft.

76 Pelican Pt, WATSONVILLE, CA 95076

OPEN SAT, 1PM TO 4PM

\$799,000

2 Beds 2.5 Baths 1,159 Sq. Ft.

1632 Killdeer Pl, SANTA CRUZ, CA 95062

\$699,000

2 Beds 2 Baths 1,060 Sq. Ft.

111 Bean Creek Rd #136, SCOTTS VALLEY, CA 95066

\$669,000

2 Beds 1 Bath 1,004 Sq. Ft.

1925 46th Ave #112, CAPITOLA, CA 95010

[View More Homes](#)

Nearby Recently Sold Homes

Nearby homes similar to 4250 Diamond St #3 have recently sold between \$420K to \$1,650K at an average of \$905 per square foot.

SOLD APR 22, 2022

\$605,000 Last Sold Price

1 Bed 1 Bath 667 Sq. Ft.

1925 46th Ave #72, CAPITOLA, CA 95010

SOLD MAY 9, 2022

\$1,650,000 Last Sold Price

2 Beds 2 Baths 1,134 Sq. Ft.

870 Park Ave #214, CAPITOLA, CA 95010

SOLD FEB 18, 2022

\$950,000 Last Sold Price

2 Beds 1 Bath 704 Sq. Ft.

815 Balboa Ave #301, CAPITOLA, CA 95010

[View More Recently Sold Homes](#)

Home Values Near 4250 Diamond St #3

Data from public records.

Address

[4200 Diamond St Apt 1, CAPITOLA, CA](#)

2 Beds | 1 Baths | 800 Sq. Ft.

[4200 Diamond St Apt 4, Capitola, CA](#)

2 Beds | 1 Baths | 925 Sq. Ft.

[4250 Diamond St Apt 4, CAPITOLA, CA](#)

2 Beds | 1 Baths | 925 Sq. Ft.

[4300 Diamond St Apt 3, Capitola, CA](#)

2 Beds | 1 Baths | 890 Sq. Ft.

[4280 Diamond St Apt 2, Capitola, CA](#)

[Show More](#) 

More Real Estate Resources

New Listings in 95010

[726 Gilroy Dr](#)

[825 Balboa Ave #304](#)

[4570 Crystal St](#)

[1385 45th Ave #4](#)

[1925 46th Ave #112](#)

[605 Escalona Dr](#)

[Show More](#) 

Zip Codes

[95010](#) homes for sale

[95062](#) homes for sale

[95003](#) homes for sale

Nearby Cities

[Gilroy](#) homes for sale

[Felton](#) homes for sale

[Saratoga](#) homes for sale

[San Jose](#) homes for sale

[Watsonville](#) homes for sale

[Pacific Grove](#) homes for sale

[Show More](#) 

Neighborhoods

[Jewel Box](#) homes for sale

[41st Avenue](#) homes for sale

[Loma Vista homes for sale](#)

Popular Searches

[Luxury homes in Capitola](#)

[Condos in Capitola](#)

[Single story homes in Capitola](#)

[Homes with pools in Capitola](#)

[New listings in Capitola](#)

[Vintage homes in Capitola](#)

[Show More](#) 

Frequently Asked Questions for 4250 Diamond St #3

What is 4250 Diamond St #3?



How competitive is the market?

How much is this home worth?



What comparable homes are there?

When was this home built and last sold?



What's the full address?

Join us

[Be a Redfin Agent](#)

[Get referrals](#)

[See all jobs](#)

About us

[Our Mission](#)

[Press](#)

[Investors](#)

[Blog](#)

[Real Estate News](#)

Find us

[Redfin App](#)

[Contact Us](#)

[Help](#)



[Countries](#)

 [United States](#)

 [Canada](#)

Updated June 2022: By searching, you agree to the [Terms of Use](#), and [Privacy Policy](#).

[Do Not Sell My Personal Information](#)

REDFIN IS COMMITTED TO AND ABIDES BY THE FAIR HOUSING ACT AND EQUAL OPPORTUNITY ACT. READ REDFIN'S [FAIR HOUSING POLICY](#).

Copyright: © 2022 Redfin. All rights reserved. Patent pending.

REDFIN and all REDFIN variants, TITLE FORWARD, WALK SCORE, and the R logos, are trademarks of Redfin Corporation, registered or pending in the USPTO.

 [California DRE #01521930](#)

[NY Standard Operating Procedures](#)

[TREC: Info About Brokerage Services, Consumer Protection Notice](#)

If you are using a screen reader, or having trouble reading this website, please call Redfin Customer Support for help at [1-844-759-7732](#).

[Do Not Sell My Information](#)

GreatSchools Ratings provided by [GreatSchools.org](#).