

5903 Tipton Way, Los Angeles, CA 90042

\$979,000

Est. \$5,502/mo [Get a custom quote](#)

3

Beds

3

Baths

1,150

Sq Ft



About This Home

Fantastic character craftsman home in a quiet street of Highland Park with a separate meter granny flat in back. The lot goes street through street giving each home an independent and private entrance. The main home has 2 bedrooms and 1 bath along with a larger common area that

[Continue reading](#) ▾

Listed by Carlos Borraez • DRE #00930706 • Keller Williams R. E. Services

[818-434-2783](tel:818-434-2783) (agent)

carlosborraez@yahoo.com (agent)

Redfin last checked: [18 minutes ago](#) | Last updated Apr 25, 2022 • Source: CRMLS #320009666

• Also listed on [CRMLS](#) as #320009665 and on [i-Tech MLS](#)

Home Facts

Status

Pending Sale

Time on Redfin	14 days
Property Type	Single Family Residence
Year Built	1937
Style	Craftsman
Community	632 - Highland Park
Lot Size	6,994 Sq. Ft.
MLS#	320009666

Price Insights

Est. Mo. Payment	\$5,502
<u>Redfin Estimate</u>	\$1,059,683
Price/Sq.Ft.	\$851
<u>Buyer's Agent Commission</u>	2.25%



Payment Calculator

\$5,502 per month i

[Find a Lender](#)

- Principal and Interest \$4,303
- Property Taxes \$1,020
- Homeowners' Insurance \$179

Down Payment	Home Price	Loan Details
20%	\$979,000	30 yr,
(\$195,800)		5.204%

ty

5,800

\$0

0

e

rp-

n

by Similar Homes



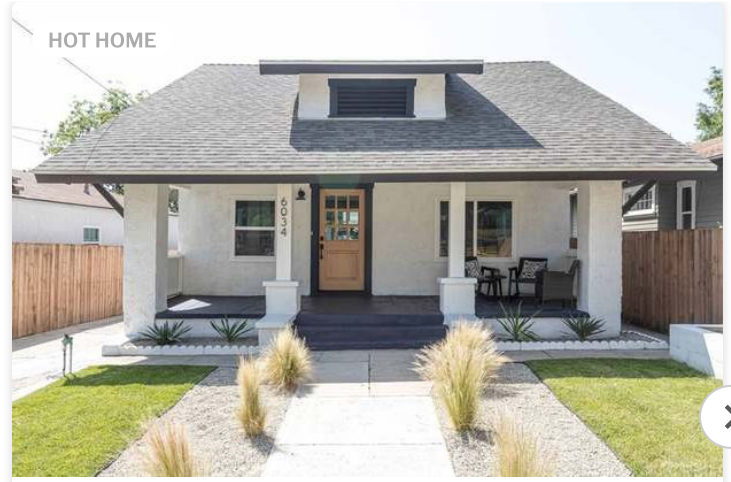
\$1,245,000

4 Beds 3 Baths 1,778 Sq. Ft.

6656 Hough St, Los Angeles, CA 90042

Garage

Walk-In Closet



\$999,000

3 Beds 2 Baths 1,150 Sq. Ft.

6034 Burwood Ave, Los Angeles, CA 90042

Yard

Deck

Property Details for 5903 Tipton Way

Interior Features

Kitchen Information

- Appliances: Range
- Has Appliances

Bathroom Information

- # of Baths (Full): 3

Cooling Information

- Wall Window
- Has Cooling

Fireplace Information

- Gas, Decorative, Living Room
- Has Fireplace

Flooring Information

- Wood

Interior Features

Estimated Monthly Payment

- Entry Level: U
- Levels: One

Parking / Garage, Location Details

Parking / Garage Information

- Attached Garage
- Driveway - Concrete
- Has Parking

Location Information

- Latitude: 34.12995800
- Longitude: -118.19099600
- Other Subdivision Name: Not Applicable-105
- Directions: Cross Streets: figueroa
- Subdivision Name: Not Applicable-105
- Zoning: LAR1

Utilities

- [Internet: High speed available](#)

Property / Lot Details

Lot Information

- Lot Size Source: Appraiser

Property Information

- Common Walls: No Common Walls
- Living Area Source: Taped
- Parcel Number: 5480012001
- Has View
- Year Built Source: Assessor

Agent & Office Information

Listing Agent Information

- List Agent First Name: Carlos
- List Agent Last Name: Borraez

LIST AGENT LAST NAME: DUTTADEZ

Listing Office Information

- List Office Name: Keller Williams R. E. Services

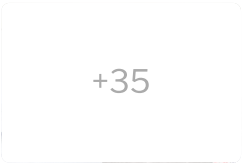
Details provided by CRMLS and may not match the public record. [Learn more.](#)

File & Tax History for 5903 Tipton Way

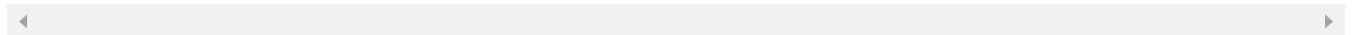
Sale History Tax History

Today

- May 3, 2022**
Date
Contingent (Active Under Contract)
CRMLS #320009665
—
Price
- Mar 15, 2022**
Date
Listed (Active)
CRMLS #320009665
\$979,000
Price



Listing provided courtesy of CRMLS



Fantastic character craftsman home in a quiet street of Highland Park with a separate meter granny flat in back. The lot goes street through street giving each home an independent and private entrance. The main home has 3 bedrooms and 1 bath along with a

[Continue reading](#) ▾

Mar, 2022

- Mar 29, 2022**
Date
Pending (Pending Sale)
i-Tech MLS #320009666
—
Price
- Mar 29, 2022**
Date
Delisted
CRMLS #320009666
—
Price
- Mar 15, 2022**
Date
Listed (Active)
CRMLS #320009666
\$979,000
Price

Date

i-Tech MLS #320009666

Price

○ Mar 15, 2022

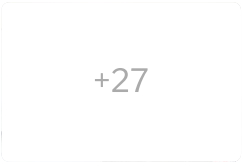
Listed

\$979,000

Date

CRMLS #320009666

Price



Listing provided courtesy of I-Tech MLS

Fantastic character craftsman home in a quiet street of Highland Park with a separate meter granny flat in back. The lot goes street through street giving each home an independent and private entrance. The main home has 2 bedrooms and 1 bath along with a

[Continue reading](#) ▾

[See all property history](#) ▾

Schools

This home is within the [Los Angeles Unified School District](#).

Los Angeles's enrollment policy is not based solely on geography. Please check the school district website to see all schools serving this home.

GreatSchools Summary Rating

4/10

Annandale Elementary School

Public, K-6 • Serves this home

165

Students

0.3mi

Distance



13 reviews

4/10

Seventh Street Elementary S...

Public, K-5 • Choice school

394

Students

27.9mi

Distance



27 reviews

6/10

Luther Burbank Middle School

Public, 6-8 • Serves this home

1055

Students

0.8mi

Distance



5 reviews

	Serves this home	Students	Distance	Reviews
7/10	Eagle Rock High School Public, 7-12 • Serves this home	2291 Students	0.8mi Distance	★★★★★ 19 reviews
-/10	Dorothy V. Johnson Communi... Public, 7-12 • Choice school	79 Students	13.5mi Distance	★★★★★ 1 reviews
2/10	Thomas Jefferson Senior Hig... Public, 9-12 • Choice school	644 Students	9.0mi Distance	★★★★★ 14 reviews
-/10	San Antonio Continuation Sc... Public, 9-12 • Choice school	161 Students	9.9mi Distance	★★★★★ 3 reviews

School data is provided by GreatSchools, a nonprofit organization. Redfin recommends buyers and renters use GreatSchools information and ratings as a first step, and conduct their own investigation to determine their desired schools or school districts, including by contacting and visiting the schools themselves.

Redfin does not endorse or guarantee this information. School service boundaries are intended to be used as a reference only; they may change and are not guaranteed to be accurate. To verify school enrollment eligibility, contact the school district directly.

ound This Home

Transportation in Eagle Rock



53 / 100

Somewhat Walkable
Walk Score®



41 / 100

Some Transit
Transit Score®



21 / 100

Somewhat Bikeable
Bike Score®



Places Nearby

9 groceries, 78 restaurants, 9 parks



Activity for 5903 Tipton Way

 2,609 <small>Views</small>	 109 <small>Favorites</small>	 15 <small>X-Outs</small>	 0 <small>Redfin Tours</small>
---	---	---	--

Public Facts for 5903 Tipton Way

Beds	1
Baths	—
Finished Sq. Ft.	180
Unfinished Sq. Ft.	—
Total Sq. Ft.	180
Stories	—
Lot Size	6,994 Sq. Ft.
Style	Multi-Family (2-4 Unit)
Year Built	1937
Year Renovated	—
County	Los Angeles County
APN	5480012001

Home facts updated by county records on Apr 16, 2022.

Climate Risk

About Climate Risk

Most homes have some risk of natural disasters, and may be impacted by climate change due to rising temperatures and sea levels.

Flood Risk Provided by First Street Foundation



Flood Factor

We're working on getting current and accurate flood risk information.

Environmental Risks Provided by ClimateCheck



Storm Risk

Moderate - 13 storms expected in 2050



Drought Risk

Extreme - Water stress expected to be 61% in 2050



Heat Risk

Moderate - 31 hot days expected in 2050



Fire Risk

Moderate - 2.9% of land expected to burn in 2050



Climate risk data is provided for informational purposes only by Flood Factor™ and ClimateCheck®.

Redfin does not endorse nor guarantee this information. By providing this information, Redfin and its agents are not providing advice or guidance on flood risk, flood insurance, or other climate risks. Redfin strongly recommends that consumers independently investigate the property's climate risks to their own personal satisfaction.

Questions or feedback about this data? Get help at floodfactor.com and climatecheck.com

Redfin Estimate for 5903 Tipton Way

\$1,059,683

+\$81K over list price of \$979K

Redfin Estimate based on recent home sales. [View estimate history.](#)



\$930,000 Sold Price

A

2 Beds 2 Baths 1,109 Sq. Ft.

7279 N Figueroa St, Los Angeles, CA 90041

— \$12/sq ft

↓ smaller lot

↑ 9 years newer



\$1,005,000 Sold Price

B

4 Beds 4 Baths 2,234 Sq. Ft.

6910 N Figueroa St, Los Angeles, CA 90042

— \$401/sq ft

↓ smaller lot

↓ 9 years older

[View comparables on map](#) ▾

Track this home's value and get nearby sales activity [Claim This Home](#)

Market Insights for 5903 Tipton Way

Based on homes from MLS and/or public records

[Redfin](#) > [California](#) > [Los Angeles](#) > [Eagle Rock](#)

Single-Family Home Sales (Last 30 days)

Northeast LA Neighborhood

\$1.05M

Median List Price

23

Median Days on Mkt.

81

Listed Homes

\$905

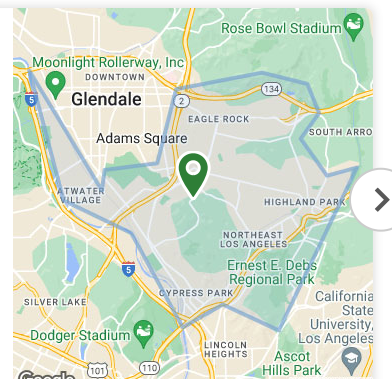
Median \$ / Sq. Ft.

116.6%

Median Sale-to-List

86

Sold Homes





Single-Family Home Trends in Northeast LA

Median Sale Price

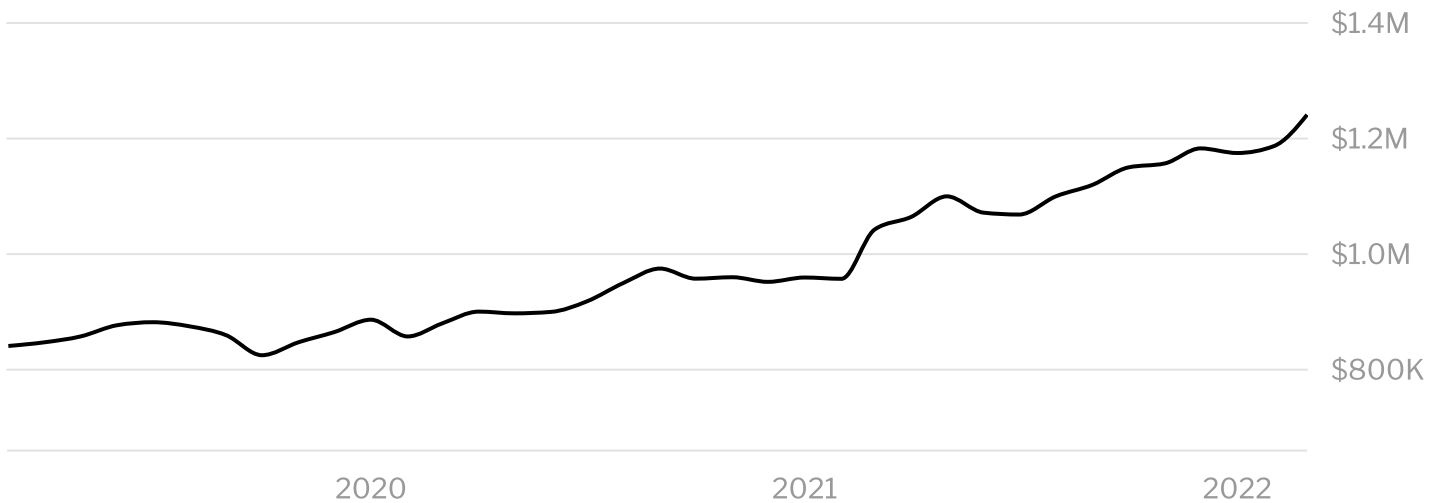
Single Family Homes

Median Sale Price (Single Family Homes)

\$1,241,250

+19.1% YoY | Mar 2022

1y 3y 5y



Share

Embed

Location	Data	Growth % YoY
Northeast LA	\$1,241,250	+19.1%

[See more market trends in Northeast LA](#)

Market Competition in Northeast LA

Calculated over the last 3 months

68 Somewhat Competitive

Redfin Compete Score™ 

0

100

- Some homes get multiple offers.
- The average homes sell for about **13%** above list price and go pending in around **27 days**.
- Hot homes can sell for about **25%** above list price and go pending in around **15 days**.

Compare to nearby Neighborhoods



What It Takes to Win an Offer near **Northeast LA**

~\$550K Offer

7 Weeks Ago

2 Beds, 2 Baths, ~1,000 Sq. Ft. Condo

Offer Not Accepted — Sold for \$650K

8%

28

24

~30%

Over List Price

Days on Market

Competing Offers

Down Payment

Submitted 40k above asking but the seller only countered the top 5 of 25 total offers

[Josh Ritnimit](#)

Redfin Agent

[More Offer Insights](#) 

Nearby Similar Homes

Homes similar to this home are listed between \$850K to \$1,495K at an average of \$830 per square foot.

\$1,245,000

4 Beds 3 Baths 1,778 Sq. Ft.

6656 Hough St, Los Angeles, CA 90042

Garage

Walk-In Closet

HOT HOME

\$999,000

3 Beds 2 Baths 1,150 Sq. Ft.

6034 Burwood Ave, Los Angeles, CA 90042

Yard

Deck

\$1,299,999

4 Beds 2 Baths 1,482 Sq. Ft.

5904 Annan Way, Los Angeles, CA 90042

RE/MAX FREEDOM

Garage

Fireplace

Hardwood Floor

Granite Countertops

Stainless Appliances

Stucco

Cul-de-sac

C

3D WALKTHROUGH

\$869,000

3 Beds 2 Baths 1,236 Sq. Ft.

5829 Arroyo Dr, Los Angeles, CA 90042

Parking

Stucco

Walk-In Closet

\$1,495,000

3 Beds 2 Baths 1,530 Sq. Ft.

913 Rutland Ave, Los Angeles, CA 90042

Yard

Garage

Low Street Noise

Quartz Countertops

Stainless Appliances

Modern

\$849,906

2 Beds 1 Bath 924 Sq. Ft.

1048 Dexter St, Los Angeles, CA 90042

TREELANE REALTY GRP, INC.

Yard

[View More Homes](#)

Nearby Recently Sold Homes

Nearby homes similar to this home have recently sold between \$1,090K to \$1,620K at an average of \$1,055 per square foot.

SOLD APR 12, 2022

\$1,275,000 Last Sold Price

3 Beds 2 Baths 1,370 Sq. Ft.

6229 Roy St, Highland Park, CA 90042

Yard

Low Street Noise

Fireplace

Deck

Quartz Countertops

Stainless Appliances

Modern

SOLD MAY 3, 2022

\$1,210,000 Last Sold Price

2 Beds 1 Bath 1,276 Sq. Ft.

1468 Holbrook St, Los Angeles, CA 90041

Yard

Low Street Noise

Fireplace

SOLD APR 14, 2022

\$1,310,000 Last Sold Price

2 Beds 2 Baths 1,189 Sq. Ft.

6234 Roy St, Los Angeles, CA 90042

Yard

Low Street Noise

Modern

[View More Recently Sold Homes](#)

More Real Estate Resources

New Listings in 90042

[427 Kendall Ave](#)

[6726 N Figueroa St](#)

[6106 Mesa Ave](#)

[6414 Ruby St](#)

[805 Temple Ter #312](#)

[534 Kendall Ave](#)

[Show More](#) ▼

Neighborhoods

[Encino homes for sale](#)

[Studio City homes for sale](#)

[Sherman Oaks homes for sale](#)

[Northridge homes for sale](#)

[Woodland Hills homes for sale](#)

Zip Codes

[91011 homes for sale](#)

[90049 homes for sale](#)

[90210 homes for sale](#)

[90024 homes for sale](#)

[90025 homes for sale](#)

Nearby Cities

[Pasadena homes for sale](#)

[Anaheim homes for sale](#)

[Whittier homes for sale](#)

[Newport Beach homes for sale](#)

[Huntington Beach homes for sale](#)

[Santa Clarita homes for sale](#)

[Show More](#) 

Popular Searches

[Luxury homes in Los Angeles](#)

[Vintage homes in Los Angeles](#)

[Single story homes in Los Angeles](#)

[Homes with pools in Los Angeles](#)

[New listings in Los Angeles](#)

[Multi family homes in Los Angeles](#)

[Show More](#) 

Frequently Asked Questions for 5903 Tipton Way

What is 5903 Tipton Way? 

When was this home

How many photos are available for this home? 

How competitive is

How much is this home worth? 

What comparable h

How long has this home been listed on Redfin? 

What's the full addr

Join us

Be a Redfin Agent

Get referrals

See all jobs

About us

[Our Mission](#)

[Press](#)

[Investors](#)

[Blog](#)

[Real Estate News](#)

Find us

[Redfin App](#)

[Contact Us](#)

[Help](#)



[Countries](#)

 [United States](#)

 [Canada](#)

Updated January 2020: By searching, you agree to the [Terms of Use](#), and [Privacy Policy](#).

REDFIN IS COMMITTED TO AND ABIDES BY THE FAIR HOUSING ACT AND EQUAL OPPORTUNITY ACT. READ REDFIN'S [FAIR HOUSING POLICY](#).

Copyright: © 2022 Redfin. All rights reserved. Patent pending.

REDFIN and all REDFIN variants, TITLE FORWARD, WALK SCORE, and the R logos, are trademarks of Redfin Corporation, registered or pending in the USPTO.

 California DRE #01521930

[NY Standard Operating Procedures](#)

TREC: [Info About Brokerage Services](#), [Consumer Protection Notice](#)

If you are using a screen reader, or having trouble reading this website, please call Redfin Customer Support for help at [1-844-759-7732](#).

GreatSchools Ratings provided by [GreatSchools.org](#).

