

← Feed



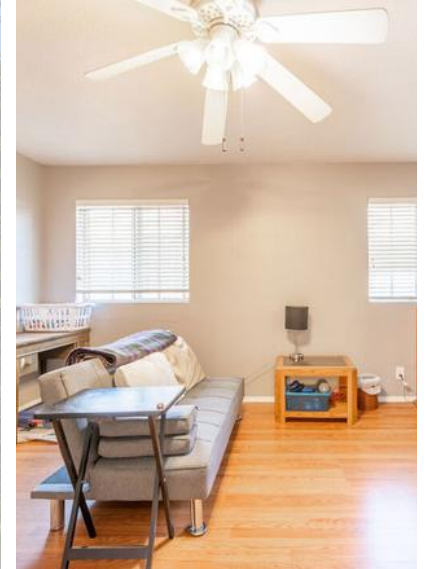
← Feed

Overview

Property Details

Sale & Tax History

Schools



8824 Dartford Pl, Inglewood, CA 90305

**\$795,000**

Price

**3**

Beds

**3**

Baths

**1,922**

Sq Ft



This one is a winner. Its not often that a two story, end of the street home comes available in the highly sought after gated community of Carlton Square. You will find this one of a kind home nestled in the corner of a private cul-de-sac. FIRST time on the market in over 20 years, this

[Continue reading](#) ▾

Listed by Shauna Dunnigan Ransom • DRE #02070380 • Remax Envision

Redfin last checked: [3 minutes ago](#) | Last updated June 10, 2021 • Source: TheMLS

### Price Insights

List Price	\$795,000
Est. Mo. Payment	\$4,047
<u>Redfin Estimate</u>	\$792,167
Price/Sq.Ft.	\$414
<u>Buyer's Brokerage Commission</u>	2.0%

HOA Dues

\$470/month

### Home Facts

Status

Pending

Time on Redfin

18 days

Property Type

Single Family Residential

Year Built

1986

Style

Contemporary

Community

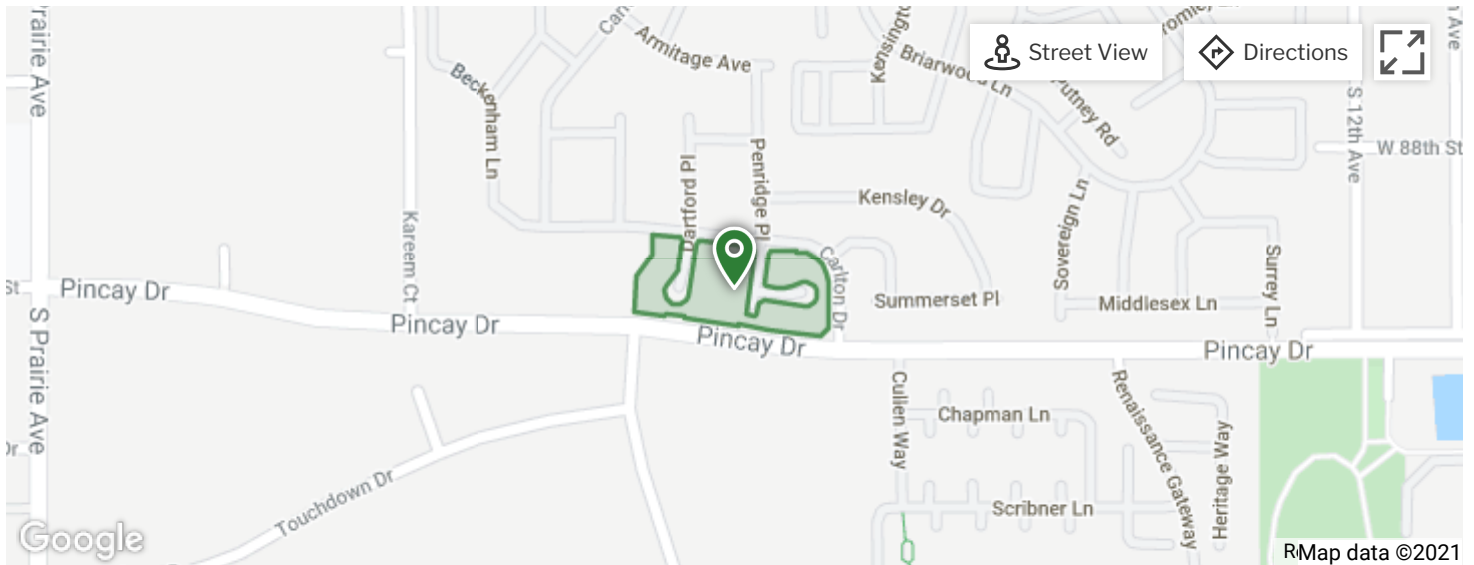
North Inglewood

Lot Size

2.90 Acres

MLS#

21-739180



## Payment Calculator





**\$4,047 per month**

Find a Lender

\$4,077 per month

Find a Lender

- Principal and Interest \$2,590
- Property Taxes \$841
- HOA Dues \$470
- Homeowners' Insurance \$146

Home Price	Down Payment	Loan Type	Interest Rate
\$795,000 	20% (\$159,000) 	30 Year Fixed 	2.732% 

## Nearby Similar Homes

**\$799,900**

NEW CONSTRUCTION    3D WALKTHROUGH

**\$1,006,511**



4 Beds 2.5 Baths 1,623 Sq. Ft.

3681 Kensley Dr, Inglewood, CA 90305

Pool

Yard

Garage

Fireplace

Cape Cod

3 Beds 3.5 Baths 2,021 Sq. Ft.

513 Daniel Freeman Cir, Inglewood, CA 90301

Pool

Granite Countertops

Walk-In Closet

## Property Details for 8824 Dartford Pl

### Interior Features

#### Bedroom Information

- All Bedrooms Up, Master Suite, WalkInCloset

#### Bathroom Information

- # of Baths (Full): 3
- Double Vanity(s)

#### Laundry Information

- Laundry in Garage

#### Additional Rooms

- Breakfast Counter / Bar
- Bonus Room, Loft, Master Bedroom, Walk-In Closet

### Interior Features

- Detached/No Common Walls
- Main Level

#### Fireplace Information

- Gas and Wood
- # of Fireplaces: 1

#### Flooring Information

- Ceramic Tile Floors, Laminate Floors

#### Equipment

- Dryer, Dishwasher, Microwave, Garbage Disposal, Washer, Refrigerator

#### Heating & Cooling

- Central Cooling
- Electric Heat

## Parking / Garage

### Garage

- 2 Car Garage
- # of Garage Spaces: 2

### Parking

- # of Parking Spaces (Total): 2

## Exterior Features

### Building Information

- Total Floors: 2
- Split Level
- Detached
- Detached/No Common Walls
- Security Features: Card/Code Access, Gated Community with Guard, Smoke Detector, 24 Hour

### Exterior Features

- Other Structural Features: High Ceilings (9 Feet+)

### Pool Information

- Association Pool
- Bath Tub, Association Spa

## Homeowners Association, Taxes / Assessments, Location Details, Documents & Disclosures

### HOA Information

- Amenities: Basketball Court, Picnic Area, Playground, Pool, Gated Community Guard, Clubhouse, Tennis Courts
- Fee #1: \$470
- Fee #1 Frequency: Monthly
- Fees Include On Site Security

### Assessment Information

- Assessor Parcel Number: 4025-018-208

### Location Information

- Complex Name: Carlton Square

- Directions: Left on Manchester. Enter Carlton Square at the Manchester gate.

### Documents & Disclosures

- Disclosures: As Is

### Property / Lot Details

#### Property Information

- Property Type: Residential Single-Family

#### Land Information

- Other Structures: None

#### Lot Information

- Lot Size (Sq. Ft.): 126,480
- Lot Size (Acres): 2.9036
- Zoning: INCR\*

#### Property Features

- Has View
- View: City, Landmark

### Listing Information

#### Listing Information

- Possession: Close Of Escrow

#### Buyer's Brokerage Compensation i

- 2.0%

Details provided by TheMLS and may not match the public record. [Learn more.](#)

## File & Tax History for 8824 Dartford Pl

Sale History

Tax History

Today

○ Jun 10, 2021

Pending

—

Date

TheMLS #21-739180

Price

○ May 28, 2021

Listed (Active)

\$795,000

Date

TheMLS #21-739180

Price

### Mar 1999, Sold for \$235,000

○ Mar 10, 1999

Sold (Public Records)

\$235,000

Date

Public Records

Price

[See all property history](#) ▾

\*\* Price available after [signing in](#).

## Schools

### GreatSchools Rating

1/10

215  
Students



1.0 mi  
Distance

#### Lane (warren) Elementary School

Public • K to 6 • Serves this home

NR

494  
Students



1.3 mi  
Distance

#### Monroe (albert F.) Middle School

Public • 6 to 8 • Serves this home

2/10

703  
Students



1.1 mi  
Distance

#### Morningside High School

Public • 9 to 12 • Serves this home

School data provided by [GreatSchools](#). School service boundaries are intended to be used as reference only. To verify enrollment eligibility for a property, contact the school directly.

## Activity for 8824 Dartford Pl



1.440



70



6



0

Views

Favorites

X-Outs

Redfin Tours

## Key Facts for 8824 Dartford Pl

Beds	3
Baths	3
Finished Sq. Ft.	1,922
Unfinished Sq. Ft.	—
Total Sq. Ft.	1,922
Stories	2
Lot Size	—
Style	Condo/Co-op
Year Built	1986
Year Renovated	1990
County	Los Angeles County
APN	4025018208

Home facts updated by county records on May 30, 2021.



## Redfin Estimate for 8824 Dartford Pl



# \$792,167

-\$2,833 under list price of \$795K

Redfin Estimate based on recent home sales. [View estimate history.](#)



Track this home's value and get nearby sales activity [Claim This Home](#)

## Rental Estimate for 8824 Dartford Pl

### \$4,583 - \$5,520 / mo

Rental estimate based on recent rentals. [i](#)

## Neighborhood Info for 8824 Dartford Pl

[Redfin](#) > [California](#) > [Inglewood](#) > [90305](#)

### Transportation in 90305



**44** /100

Car-Dependent  
Walk Score®



**47** /100

Some Transit  
Transit Score®



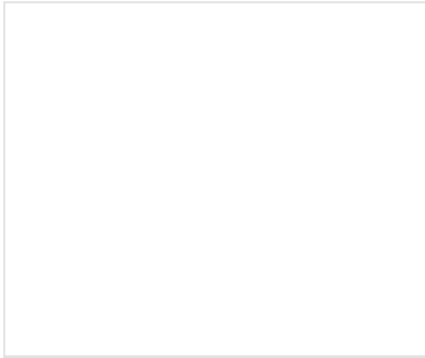
**40** /100

Somewhat Bikeable  
Bike Score®

This area is **car dependent** — most errands require a car. **Transit is available**, with a few nearby public transportation options. There is a **minimal amount of infrastructure for biking**.

public transportation options. There is a minimal amount of infrastructure for biking.

### 90305 Real Estate Sales (Last 30 days)



Median List Price	\$725K
Median \$ / Sq. Ft.	\$444
Median Sale / List	102.0%

### Market Competition in 90305

Calculated over the last 6 months

**72** Very Competitive  
Redfin Compete Score™ i

0

100

- Many homes get multiple offers, some with waived contingencies.
- The average homes sell for about **3%** above list price and go pending in around **39 days**.
- Hot homes can sell for about **6%** above list price and go pending in around **16 days**.

### Median Real Estate Values

Location	List Price	\$ / Sq. Ft.	Sale / List
Hollywood Park Race Track & Casino	\$677,500	\$453	103.0%
Century	\$797,450	\$515	101.8%
Century Project Area	\$699,895	\$434	101.7%

Morningside Park	\$725,000	\$444	102.0%
90305	\$725,000	\$444	102.0%
Inglewood	\$722,000	\$475	99.9%
Los Angeles County	\$898,000	\$552	103.5%

### \$/Sq. Ft. Houses in 90305



## Recommended For You

Based on homes you've looked at.

OPEN THU, 11AM TO 2PM

**\$1,047,000**

3 Beds 2 Baths 1,547 Sq. Ft.

4448 Sunnycrest Dr, Los Angeles, CA 90065

---

3D WALKTHROUGH

**\$899,000**

2 Beds 1 Bath 1,380 Sq. Ft.

2819 Palmer Dr, Eagle Rock, CA 90065

---

HOT HOME

**\$919,500**

3 Beds 1 Bath 1,383 Sq. Ft.

1122 Raleigh St, Glendale, CA 91205

---

OPEN SAT, 2PM TO 4PM

**\$1,050,000**

4 Beds 2 Baths 1,608 Sq. Ft.

6/15/2021

8824 Dartford Pl, Inglewood, CA 90305 | MLS# 21-739180 | Redfin

2223 Alsace Ave, Los Angeles, CA 90016

---

---

**\$998,000**

4 Beds 2 Baths 1,700 Sq. Ft.

2847 Somerset Dr, Los Angeles, CA 90016

---

---

**\$1,499,000**

3 Beds 2 Baths 1,922 Sq. Ft.

3131 Hamilton Way, Los Angeles, CA 90026

[See 19 More Homes in Your Feed](#)

## Nearby Similar Homes

Homes similar to 8824 Dartford Pl are listed between \$350K to \$1,300K at an average of \$555 per square foot.



**\$799,900**

4 Beds 2.5 Baths 1,623 Sq. Ft.

3681 Kensley Dr, Inglewood, CA 90305

Pool

Yard

Garage

Fireplace

Cape Cod

---

NEW CONSTRUCTION

3D WALKTHROUGH

**\$1,006,511**

3 Beds 3.5 Baths 2,021 Sq. Ft.

513 Daniel Freeman Cir, Inglewood, CA 90301

Pool

Granite Countertops

Walk-In Closet

---

**\$1,300,000**

4 Beds 3 Baths 1,964 Sq. Ft.

8205 Maitland Ave, Inglewood, CA 90305

Yard

Garage

Quartz Countertops

---

**\$650,000**

2 Beds 2 Baths 1,512 Sq. Ft.

2051 W 85th St, Los Angeles, CA 90047

Garage

Stucco

---

3D & VIDEO TOUR

**\$695,000**

2 Beds 1.5 Baths 1,068 Sq. Ft.

381 La Colina Dr, Inglewood, CA 90302

Lyon Stahl Investment Real Estate, Inc.

Yard

Garage

Fireplace

Spa

---

READY TO BUILD

**\$939,990+**

3 Beds 2.5 Baths 1,564 Sq. Ft.

Residence 1, Inglewood, CA 90301

---

[View More Homes](#)

---

## Nearby Recently Sold Homes

Nearby homes similar to 8824 Dartford Pl have recently sold between \$730K to \$920K at an average of \$445 per square foot.

---

SOLD FEB 8, 2021

**\$812,000** Last Sold Price

4 Beds 2 Baths 2,598 Sq. Ft.

3313 W 81st St, Inglewood, CA 90305

Low Street Noise

---

SOLD DEC 22, 2020

**\$801,338** Last Sold Price

3 Beds 1.5 Baths 1,450 Sq. Ft.

8238 Park Cir, Inglewood, CA 90305

Yard

Garage

Parking

Hardwood Floor

Formal Dining Room

Stucco

---

SOLD FEB 3, 2021



**\$920,000** Last Sold Price

4 Beds 3 Baths 2,188 Sq. Ft.

7619 Victoria Ave, Inglewood, CA 90305

Walk-In Closet

Kitchen Island

[View More Recently Sold Homes](#)

## More Real Estate Resources

### New Listings in 90305

[2416 W 77th St](#)

[3500 W Manchester Blvd #290](#)

[8205 Maitland Ave](#)

[3607 W Medici Ln](#)

[2310 W 78th St](#)

[3500 W Manchester Blvd #398](#)

[Show More](#) 

### Zip Codes

[90043](#) homes for sale

[90250](#) homes for sale

[90044](#) homes for sale

[90045](#) homes for sale

[90047](#) homes for sale

### Neighborhoods

[Imperial Highway](#) homes for sale

[Downtown Inglewood](#) homes for sale

[Windsor Hills](#) homes for sale

[Downtown](#) homes for sale

[Morningside Park](#) homes for sale

[Westchester-Playa Del Rey](#) homes for sale

Show More 

### Nearby Cities

[Pasadena](#) homes for sale

[Los Angeles](#) homes for sale

[Downey](#) homes for sale

[Cerritos](#) homes for sale

[Whittier](#) homes for sale

[Anaheim](#) homes for sale

Show More 

### Popular Searches

[Inglewood Apartments for Rent](#) on ApartmentGuide.com

[Inglewood Houses for Rent](#) on Rent.com

[Vintage](#) in Inglewood

[Luxury homes](#) in Inglewood

[Single story homes](#) in Inglewood

[New listings](#) in Inglewood

Show More 

---

## Frequently Asked Questions for 8824 Dartford Pl

What is 8824 Dartford Pl?



How competitive is t

How many photos are available for this home?



What amenities are

How much is this home worth?



What comparable h

---

How long has this home been listed on Redfin? ∨

---

What's the full address?

When was this home built and last sold? ∨

---

### Join us

Be a Redfin Agent

Get referrals

See all jobs

### About us

[Our Mission](#)

[Press](#)

[Investors](#)

[Blog](#)

[Real Estate News](#)

### Find us

[Redfin App](#)

[Contact Us](#)

[Help](#)



[Countries](#)

[United States](#)

[Canada](#)

Updated January 2020: By searching, you agree to the [Terms of Use](#), and [Privacy Policy](#).

Copyright: © 2021 Redfin. All rights reserved. Patent pending.

REDFIN and all REDFIN variants, TITLE FORWARD, WALK SCORE, and the R logos, are trademarks of Redfin Corporation, registered or pending in the USPTO.

California DRE #01521930

TREC: [Info About Brokerage Services, Consumer Protection Notice](#)

If you are using a screen reader, or having trouble reading this website, please call Redfin Customer Support for help at [1-844-759-7732](tel:1-844-759-7732).

GreatSchools Ratings provided by [GreatSchools.org](https://www.greatschools.org).