



Buy ▾

Sell ▾

Real Estate Agents

Log In

Sign Up



**459 SONOMA Ave**  
Rodeo, CA 94572

**\$300,000**

Listed at Price

**2**  
Beds

**2**  
Baths

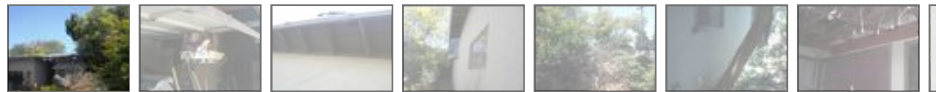
**1,215**  
Sq. Ft.

Redfin Estimate: \$313,796 On Redfin: 28 days  
Status: Pending Sale



**Sale Pending**

The seller has accepted an offer, and the property is now pending or under contract.

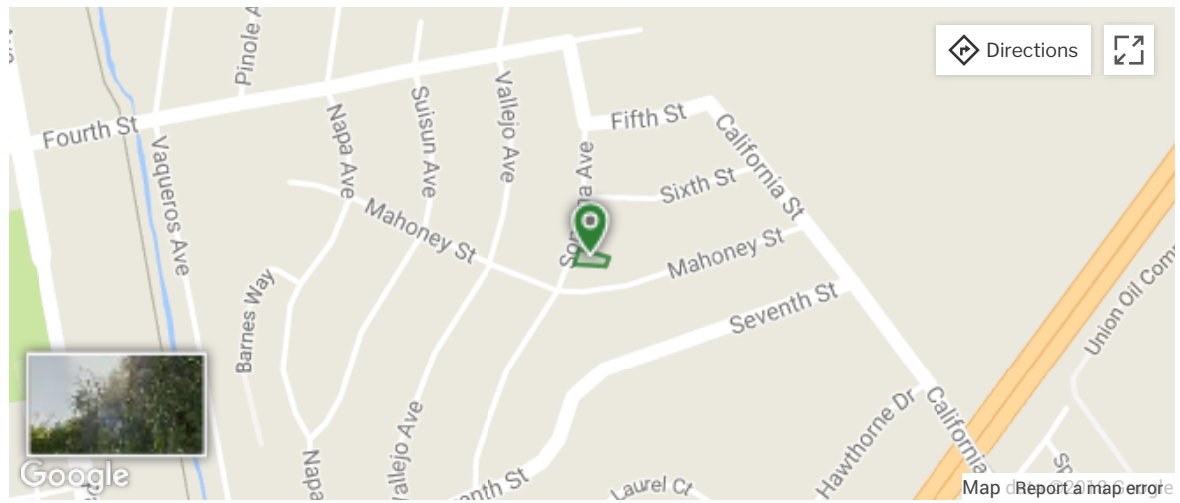


Street View

# About This Home

THIS HOME IS MAJOR, MAJOR FIXER, BEING SOLD AS- IS, BRING YOUR CONTRACTOR AND FLASH LIGHT. WILL NOT LAST LONG

PROPERTY TYPE	1 House on Lot, Detached	STYLE	Cottage/Bungalow
Community	Rodeo	County	<u>Contra Costa</u>
MLS#	18040175	Built	1957
Lot Size	4,861 square feet		



-- min · [Add a Commute](#)

Listed by Darryl Newell · Vantage Point · BRE #01115296

Last updated 2 minutes ago. Source: MetroList

## Payment Calculator

**\$1,579 per month**

30 Year Fixed, 4.380% Interest ⓘ

● Principal and Interest	<b>\$1,199</b>
● Property Taxes	<b>\$325</b>
● Homeowners' Insurance	<b>\$55</b>

---

Home Price

\$300,000

Down Payment

\$60,000

20%

[Customize Calculations](#) [Compare Mortgage Rates](#)

---

## Nearby Similar Homes

## Property Details for 459 SONOMA Ave

### Interior Features

#### Bedroom Information

- Master has Closet

#### Bathroom Information

- # of Full: 2
- Bath Description: Tub w/Shower Over
- Master has Tub with Shower

#### Dining Information

- Dining Description: Dining/Living Combo, Space in Kitchen

#### Kitchen Information

- Laminate Counter, Pantry (Closet)
- Kitchen Appliances: Dishwasher, Disposal, Oven Gas B/I

#### Interior Features

- Additional Features: Front Porch, Patio Uncovered
- Floor Covering(s): Carpet, Linoleum/Vinyl
- 220 Volt Hook-up (Laundry), Laundry In Garage

#### Additional Rooms

- Living Room

#### Heating & Cooling

- Air: Other-Attch
- Heat: None

### Parking / Garage, Exterior Features, Homeowners Association, School / Neighborhood

#### Parking & Garage

- Garage: 2 Car Attached
- # of Garage Spaces: 2

#### Building Information

- Sq. Ft. Source: Assessor/Agent-Fill
- Construction: Wood
- Exterior: Stucco
- Raised Foundation

#### Homeowners Association

- HOA: No

#### School Information

- Elementary: Other
- Junior High: Other
- High School: Other
- School County: Contra Costa

### Utilities, Location Details

#### Utility Information

- Sewer: In & Connected
- Irrigation Water: Public District
- Domestic Water: Public District

- Utilities: 220 Volts, Natural Gas

- Map Coordinates: -

**Location Information**

- Cross Street Address: MAHONEY STREET
- Directions: TAKE EXIT 24 FOR WILLOW AVE R ON WILLOW AVE R ON SEVENTH ST LEFT ON SONOMA AVE

**Property / Lot Details**

**Property Information**

- # of Units: 0
- Roof Description: Comp Shingle
- Parcel #: 357-224-002-0
- Fenced (Back)
- Zoning: P-1

**Lot Information**

- Site Location: Other-Rmks
- Site Description: Shape Regular

- Improvements: Sidewalk, Street Lights
- Acres: 0.1116
- Census Tract: 3580.00
- Lot Dimensions: XXXXXXXXXX
- Paved Road

**Vacant Land Features**

- House Faces: West
- Horse Property: No

Details provided by MetroList and may not match the public record. [Learn more.](#)

## Redfin Tour Insights for 459 SONOMA Ave

### No Tour Insights on This Listing

We haven't left any insights about this home yet, but as soon as we do, we'll leave our thoughts here.

## Redfin Estimate for 459 SONOMA Ave

# \$313,796

+\$14K over list price of \$300K [Show History](#)

Estimate based on these recent sales. 

A SOLD 6/18/18

B SOLD 12/28/17



Sale Price

**\$485,000**

465 Suisun Ave  
Rodeo, CA 94572

**3** **2** **1,074**  
Beds Baths Sq. Ft.



Sale Price

**\$465,000**

461 Vallejo Ave  
Rodeo, CA 94572

**4** **3** **1,740**  
Beds Baths Sq. Ft.

## Property History for 459 SONOMA Ave

Date	Event & Source	Price
May 11, 2000	Sold (Public Records)	\$175,000
Apr 7, 2000	<a href="#">Delisted</a>	—
Jan 28, 2000	<a href="#">Listed</a>	**

For completeness, Redfin often displays two records for one sale: the MLS record and the public record. [Learn More.](#)

\*\* Price available after [signing in.](#)

## Public Facts for 459 SONOMA Ave

### Taxable Value

### Tax Record




Land	\$113,458	2016	\$3,823
Additions	\$118,281		
Total	\$231,739		

### Home Facts

Beds	2	Lot Size	4,860 Sq. Ft.
Baths	2	Style	Single Family Residential
Finished Sq. Ft.	1,215	Year Built	1957
Unfinished Sq. Ft.	—	Year Renovated	1957
Total Sq. Ft.	1,215	County	Contra Costa County
Stories	1	APN	3572240020

Home facts updated by county records on Jul 24, 2017.

## Activity for 459 SONOMA Ave

 <b>1103</b> Views	 <b>14</b> Favorites	 <b>1</b> X-Out	 <b>0</b> Redfin Tours
-------------------------------------------------------------------------------------------------------------	---------------------------------------------------------------------------------------------------------------	----------------------------------------------------------------------------------------------------------	-------------------------------------------------------------------------------------------------------------------

## Schools

**Serving This Home**   Elementary   Middle   High

School Name	Distance
<p>Rodeo Hills Elementary School</p> <p>Public • K to 5 • Serves this home</p> <p>GreatSchools Rating: 3/10</p> <p>Parent Rating: ★★★★★</p> <p><a href="#">See homes this school serves</a></p>	0.5 mi
<p>Carquinez Middle School</p> <p>Public • 6 to 8 • Serves this home</p> <p>GreatSchools Rating: 4/10</p> <p>Parent Rating: ★★★★★</p> <p><a href="#">See homes this school serves</a></p>	2.4 mi
<p>John Swett High School</p> <p>Public • 9 to 12 • Serves this home</p> <p>GreatSchools Rating: 5/10</p> <p>Parent Rating: ★★★★★</p> <p><a href="#">See homes this school serves</a></p>	2.5 mi

School data provided by [GreatSchools](#). School service boundaries are intended to be used as reference only. To verify enrollment eligibility for a property, contact the school directly.

## Neighborhood Info for 459 SONOMA Ave

[California](#) > [Rodeo](#) > [94572](#)

### Transportation in 94572



**41** / 100**Car-Dependent**

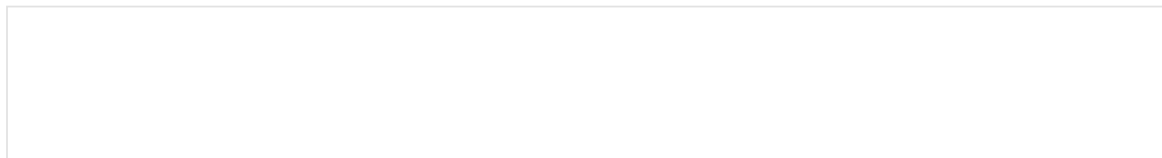
Walk Score®

This area is **car dependent** — most errands require a car.**94572 Real Estate Sales (Last 30 days)**

Median List Price	<b>\$554,950</b>	Avg. # Offers	—
Median \$ / Sq. Ft.	<b>\$328</b>	Avg. Down Payment	—
Median Sale / List	<b>103%</b>	# Sold Homes	<b>9</b>

**Median Real Estate Values**

Location	List Price	\$ / Sq. Ft.	Sale / List
Rodeo Vista	\$472,500	\$274	101.1%
Rodeo	\$552,450	\$300	103.7%
94572	\$580,000	\$301	103.1%
Rodeo	\$580,000	\$301	103.1%
Contra Costa County	\$668,888	\$391	103.3%

**\$/Sq. Ft. Houses in 94572**



## Similar Homes to 459 SONOMA Ave

### Nearby Homes for Sale

OPEN 7/21, 1PM TO 4PM

1.1  
mi.

0.3  
mi.

HOT HOME

1.8  
mi.

**\$595,000**

759 Seacliff Ct  
Rodeo, CA 94572

**4** **2** **1,405**  
Beds Baths Sq. Ft.

**\$645,000**

530 Barnes Way  
Rodeo, CA 94572

**4** **3** **2,136**  
Beds Baths Sq. Ft.

**\$649,888**

1823 Redwood Rd  
Hercules, CA 94547

**4** **2.5** **1,927**  
Beds Baths Sq. Ft.

0.1  
mi.

OPEN SAT, 12PM TO 3PM HOT HOME

2.3  
mi.

0.7  
mi.

**\$450,000**

516 Sonoma Ave  
Rodeo, CA 94572

**3** **2** **1,122**  
Beds Baths Sq. Ft.

**\$679,900**

106 Amethyst Ct  
Hercules, CA 94547

**4** **3** **2,108**  
Beds Baths Sq. Ft.

**\$995,000**

163 Watermark Ter  
Hercules, CA 94547

**5** **4.5** **3,489**  
Beds Baths Sq. Ft.

Homes similar to 459 SONOMA Ave are listed between \$450K to \$995K at an average of \$340 per square foot.

### Nearby Sold Homes

SOLD 4/17/18

1.0  
mi.

SOLD 1/11/18

0.3  
mi.

SOLD 6/26/18

0.4  
mi.**\$525,000**1293 Donald Dr  
Rodeo, CA 945723 2 1,163  
Beds Baths Sq. Ft.**\$369,500**325 Pinole Ave  
Rodeo, CA 945722 1 817  
Beds Baths Sq. Ft.**\$640,000**801 Spruce Ct  
Rodeo, CA 945723 3 2,030  
Beds Baths Sq. Ft.

SOLD 5/23/18

0.2  
mi.

SOLD 4/25/18

0.3  
mi.

SOLD 6/08/18

1.2  
mi.**\$385,000**877 4Th St  
Rodeo, CA 945722 1.5 873  
Beds Baths Sq. Ft.**\$450,000**537 Vaqueros Ave  
Rodeo, CA 945725 2 1,641  
Beds Baths Sq. Ft.**\$463,900**157 Oxford St  
Hercules, CA 945472 2 1,144  
Beds Baths Sq. Ft.

Nearby homes similar to 459 SONOMA Ave have recently sold between \$374K to \$640K at an average of \$375 per square foot.

## More Real Estate Resources

### Neighborhoods

[Rodeo Homes For Sale](#)

[Rodeo Vista Homes For Sale](#)

[Rodeo Highlands Homes For Sale](#)

[Oleum Homes For Sale](#)

### Nearby Cities

[Danville Real Estate](#)

[Concord Real Estate](#)

[Lafayette Real Estate](#)

[Pleasant Hill Real Estate](#)

[Mill Valley Real Estate](#)

[Martinez Real Estate](#)

[Show More](#) 

## Zip Codes

[94572 Homes For Sale](#)

## Popular Searches

[Rodeo Homes with Garages](#)

[Rodeo Homes with Parking](#)

[Rodeo Recently Sold Homes](#)

[Rodeo Single Story Homes](#)

[Rodeo Pending Listings](#)

[Rodeo Vintage](#)

[Show More](#) 

## New Listings in 94572

[759 Seacliff Ct](#)

[725 Mariposa](#)

[516 Sonoma Ave](#)

[530 Barnes Way](#)

[240 Suisun Ave](#)

[326 Rodeo Ave](#)

[Show More](#) 

459 SONOMA Ave is a house in Rodeo, CA 94572. This 1,215 square foot house sits on a 4,861 square foot lot and features 2 bedrooms and 2 bathrooms. This house has been listed on Redfin since June 14, 2018 and is currently priced at \$300,000. This property was built in 1957. Based on Redfin's Rodeo data, we estimate the home's value is \$313,796, which is 4.6% more than its current list price. Comparable nearby homes include [465 Suisun Ave](#), [461 Vallejo Ave](#), and [774 Reef Point Ct](#). Nearby schools include St Patrick School and Rodeo Hills Elementary School. Nearby coffee shops include jRFu and Starbucks. Nearby restaurants include Krispy Krunchy Chicken, Happy Wok and D's Giant Burgers. This address can also be written as 459 SONOMA Avenue, Rodeo, California 94572.

---

[About](#)

[Press](#)

[Investor Relations](#)

[Research](#)

[Blog](#)

[Jobs](#)

[Referrals](#)

[Mobile](#)

[Feedback](#)


[Contact Us](#)

Help



Updated February 2018: By searching, you agree to the [Terms of Use](#), and [Privacy Policy](#).

Copyright: © 2018 Redfin. All rights reserved. Patent pending.

 California BRE #01521930

TREC: [Info About Brokerage Services](#), [Consumer Protection Notice](#)

If you are using a screen reader, or having trouble reading this website, please call Redfin Customer Support for help at 1-844-759-7732.

GreatSchools Ratings provided by [GreatSchools.org](#).